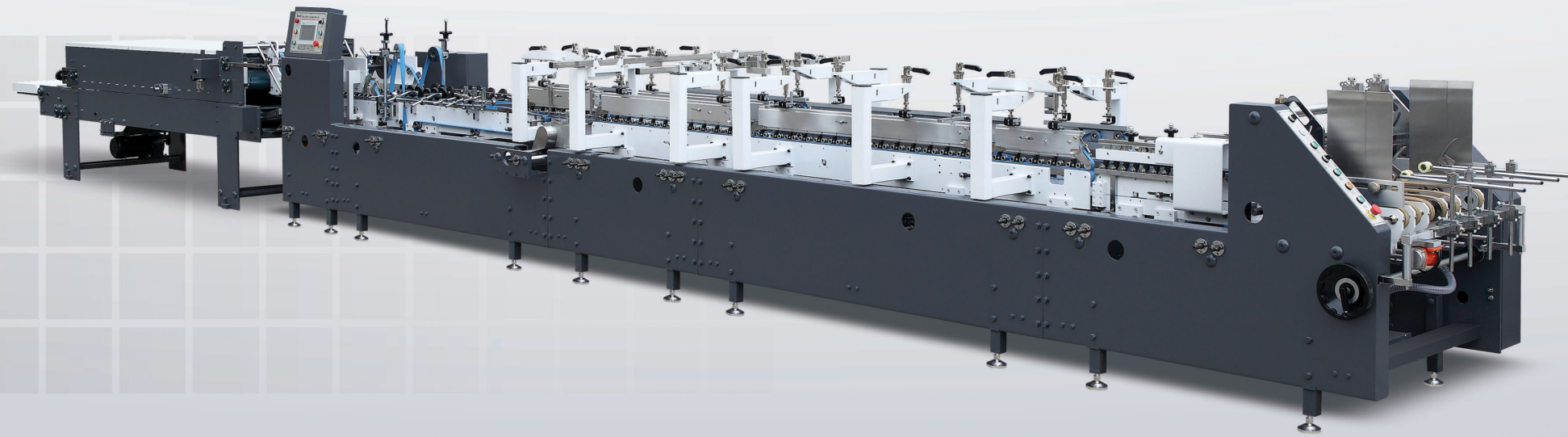


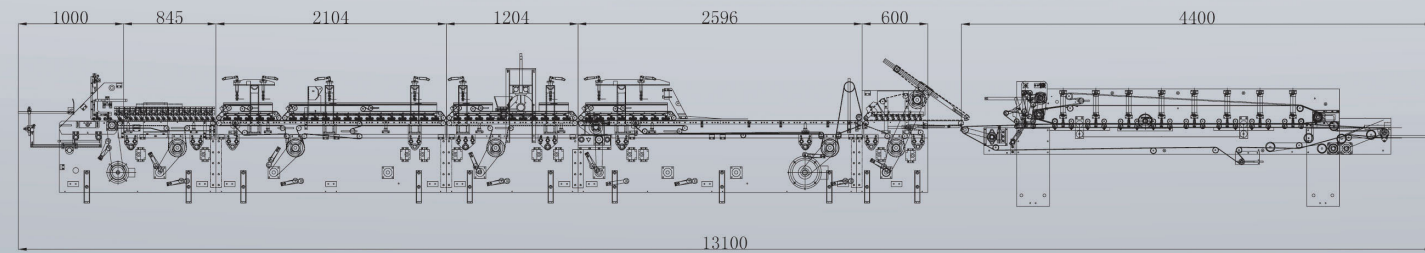
AS

Automatic High Speed Bottom Lock Folding Gluing Machine

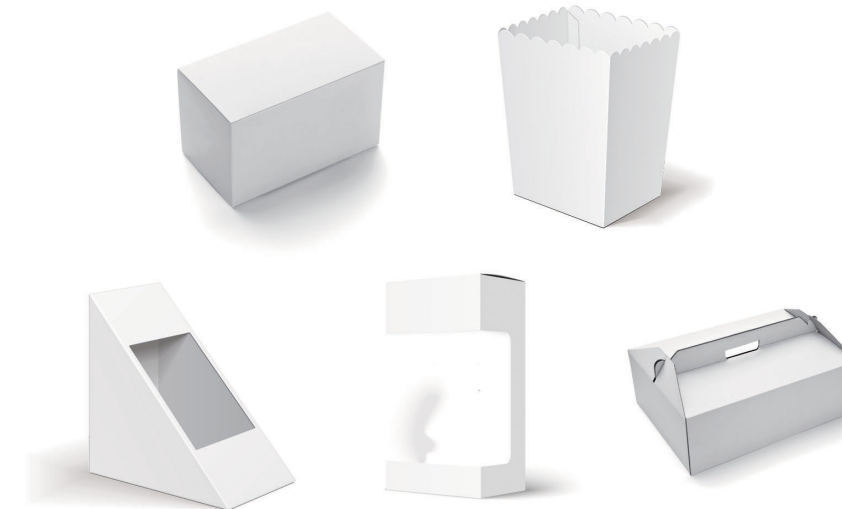
全自动高速勾底糊盒机



地基图 FOUNDATION DRAWING

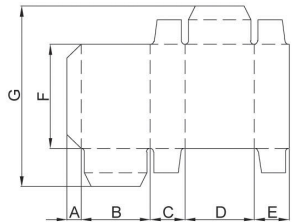


盒样展示 SAMPLES



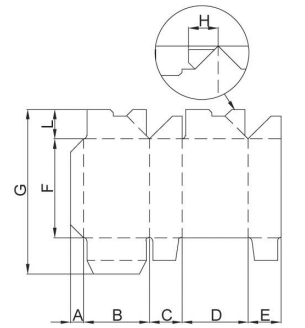
Straight Line Box
普通盒型

型号/型号 Item/Model	650Type	800Type	1100Type
配置规格	本折两板	本折两板	本折两板/三板
Way of folding	Two carriers	Two carriers	Two/three carriers
B+C+D+E	130-650	130-800	130/280-1100
C+D(Min)	65	65	65/140
F	70-700	70-700	70-700
G(Max)	700	700	700



Straight Line Box
勾底盒型

型号/型号 Item/Model	650Type	800Type	1100Type
配置规格	本折两板	本折两板	本折两板/三板
Way of folding	Two carriers	Two carriers	Two/three carriers
B+C+D+E	130-650	130-800	130/280-1100
C+D(Min)	65	65	65/140
F	70-700	70-700	70-700
G(Max)	700	700	700
H(Min)	25	25	25
L(Max)	30-100	30-100	30-100



技术参数 TECHNICAL PARAMETERS

型号	MODEL	650	800	1100
纸张材料	Paper material	卡纸Cardboard 210-800gsm, E/N/F瓦楞 E/N/F Flute		
最大速度	Max. speed	300m/min		
折叠箱厚度	Max .thickness of folded box	12mm		
折盒方式	Way of folding	第一折与第三折为180°与135°, 第二折与第四折为180° Fold 1 and fold 3 are 180°and 135°,fold 2 and fold 4 are 180°		
电源电压	Power supply	3P 380V 50HZ		
最大出纸宽度	Blank width	650mm	800mm	1100mm
长×宽×高	Length×Width×Height	12×1.08×1.4m	12×1.23×1.4m	12×1.58×1.4m
重量	Net Weight	4T	4.5T	5T
整机功率	Total power	11.2kw	12.7kw	13.4kw

注:数据如有更改,恕不另行通知。(Notes:If and change of data, we will not notify further.)